



FAX★STAR® & MAPICS

The Complete Software and Hardware Package For The AS/400 and Networks

The Complete Messaging Solution

Solution Center

Integration with MAPICS

Why

MAPICS has the option to print Invoices, Purchases Orders, Order Acknowledgements, or any other document that a Company may wish to fax or email. Even when they have customized those reports, many Companies do not have the resources to change the reports to interface with a document delivery system. Fax★Star has developed a way to distribute these documents without changing a single line of code.

How

On the IBM AS/400/iSeries, the Integrator function of Fax★Star Assistant offers an automatic handling of any spooled file. Depending on the attributes of a spooled file Fax★Star Assistant Integrator module applies a Split Rule to the Spooled File. This rule allows the ability to define:

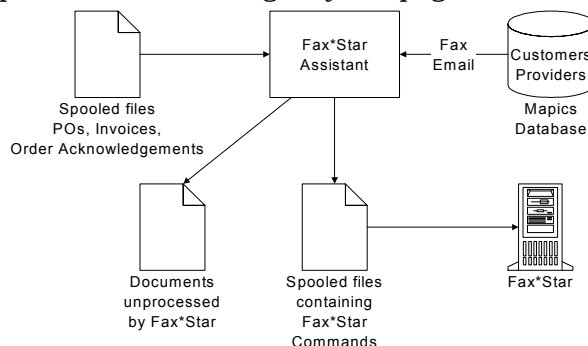
- ★ When to detect a break in a spooled file (when the report contains a new fax or a new mail). It's very handy when MAPICS produces several documents (like several POs in the same report).
- ★ Users who will manage the generated faxes.
- ★ Information enabling the retrieval of the Recipient Fax Number or Mail Address from the MAPICS database. (In some circumstances it may be necessary to write a small RPG program to perform this. The Fax★Star support team has on file programs corresponding to MAPICS.)
- ★ The Cover Page to add in front of every fax or mail.
- ★ The faxing mode (Portrait, Landscape, Attachments, etc.).
- ★ A specific Logo and/or Form overlay.
- ★ Any additional documentation that must be attached (such as Terms & Conditions).

Tricks

Depending on the APIs return code, Fax★Star Assistant has an unique feature which allows the ability to create a spooled file containing only the pages that need to be sent via fax or email.

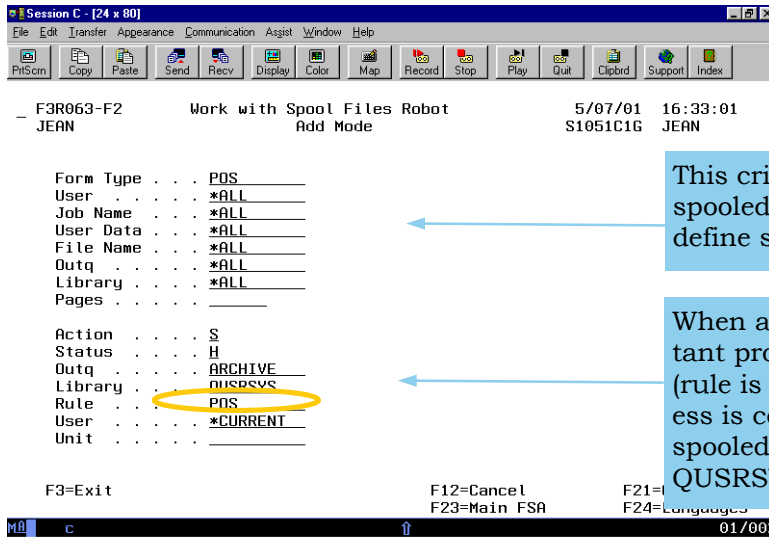


Fax & Email Automation
For The World



Using Fax★Star Assistant to Interface MAPICS with Fax★Star

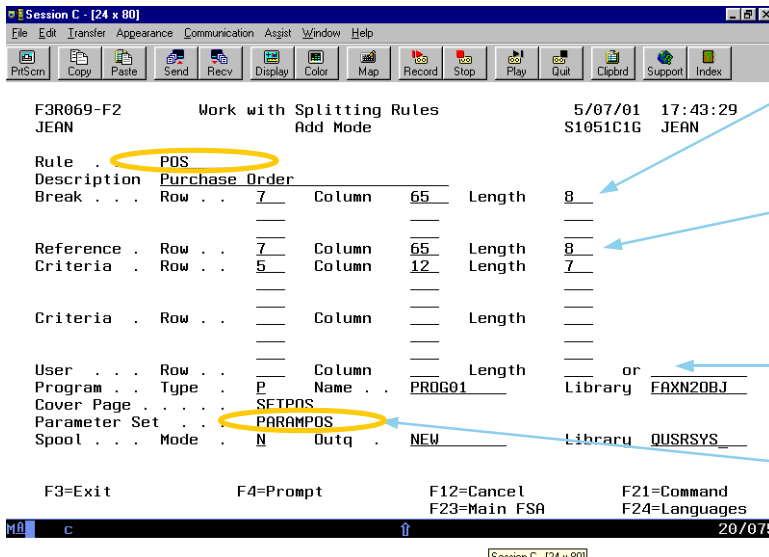
1. An example of a Fax★Star Assistant Robot rule used to automatically intercept any POS spooled file.



This criteria allows Fax★Star Assistant to select the spooled file it must intercept. The administrator can define several parameters to fine tune the process.

When a spooled file is intercepted, Fax★Star Assistant processes it depending on the rule defined here (rule is POS and action is Split (S)). When the process is completed, Fax★Star Assistant will move the spooled file in Hold (H) in the Outq ARCHIVE in QUSRSYS.

2. Here is an example of a Fax★Star Assistant Split rule defining data in the spooled file.



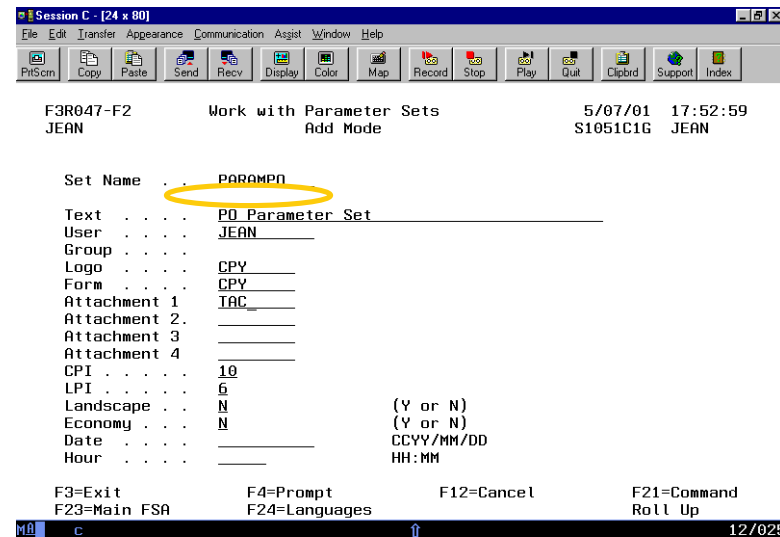
When one of these fields change, Fax★Star Assistant ends the preceding transmission and begins a new one. Here we are using the PO number on the report.

This parameter (the Provider Code) is passed to the program PROG01 defined below. This program will look in the User Database for the recipient delivery address (fax or email address).

Because this field is kept blank, the owner of the spooled file will become the owner of the documents to be delivered. We could have defined a user or picked a field in the report.

Fax★Star Assistant will generate faxes depending on the parameters defined in set PARAMPO.

3. This is the Parameter set used to generate the fax.



Faxes will be generated in portrait mode. Fax★Star Assistant will merge the data issued from the spooled file with the form CPY and the logo CPY. Fax★Star Assistant will also add the attachment TAC (terms & conditions) to every PO to be delivered. The attachment, the form and the logo are kept in the Fax★Star Server.

*Fax & Email Automation
 For The World
 "Because Time Is Money"*

IBM Server
Proven™

